

12 DAY | WESTERN QUEENSLAND LOOP

July 19 – 30 2022

Venture across the alluring landscapes of the Queensland Outback!

All aboard for an adventure through Channel Country and the heart of Western Queensland. It's an epic Outback journey covering close to 4000km, but by flying to Longreach, your time on the road will be reserved for seeing the magnificent Outback, dinosaur country, and the mighty river systems that gave the Channel Country its name. Follow the footsteps of the explorers to remote towns with familiar names and gain a whole new view of Queensland.



CT TRAVEL
Coolum Tours & Travel

12 days - Twin / Double pp	\$5450.00
Single	\$6145.00
Deposit	\$500.00

Inc Airfare – Brisbane > Longreach

www.cttravel.com.au

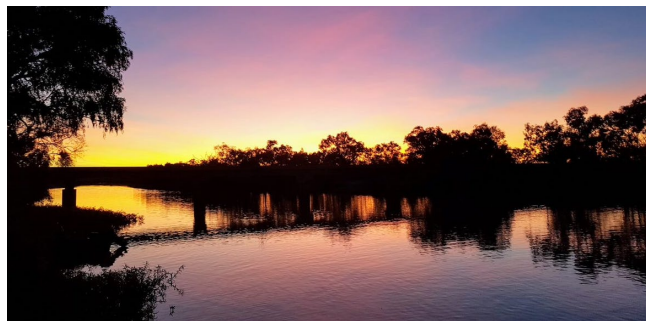
Join your coach or taxi for the transfer to Brisbane Airport where the adventure begins with a flight (Qantas of course) of just over two hours covering the 1200km to Longreach. Arrive mid-afternoon to settle in at the Albert Park Motor Inn where you'll stay for the next two nights. This afternoon we meet Outback Dan and the Walker family (who hosted the Queen and Prince Phillip at their property Camden Park), and you will experience a working sheep and cattle station. Walk through the historical Homestead Gardens, Shearing Shed and Cattle Yards then tour the farm and enjoy nibbles and drinks on sunset before enjoying a scrumptious BBQ dinner

*Albert Park Motor Inn - 2 nights
Dinner at Camden Park*

Day 2: (BLD) Longreach**Wednesday July 20**

A relaxed morning today... before we take in the sights of Longreach and surrounds. This evening the colours of the outback come alive at sunset as you glide down the Thomson River aboard the Longreach Explorer. After a warm welcome by the experienced crew, take your seat on the top deck ready to capture 360-degree sweeping, river and floodplain views. The captain will enthral you with captivating stories about the river, its wildlife and Indigenous heritage. Purchase an icy cold drink from the licensed bar to pair with complimentary savoury nibbles delights. Photo opportunities are endless, but our stop at Sunset Bend is the hands-down favourite. As the vibrant sunset colours fade into starlight, we dock at Smithy's Outback Dinner & Show. Relax under the stars with table-service dining featuring camp-oven themed modern cuisine. Live on stage, our talented musical performer will entertain you with their songs and stories.

Breakfast at motel | lunch own exp | Dinner at Smithy's Outback Dinner & Show

**Day 3: (BLD) Longreach > Winton****Thursday July 21**

Leaving Longreach, we head off to experience the freedom of the vast open plains and coolabah-lined creeks on the road to Winton. The scenery is dramatic and ever-changing. The "jump up", a rugged mesa plateau formation, towers above the surrounding plains. This is the land that was home to the dinosaurs. After a picnic lunch, we head to Lark Quarry Conservation Park where there's an animated recreation of the only dinosaur stampede on the planet. There are more than 3000 dinosaur footprints scattered over the rockface at the Dinosaur Stampede National Monument.

Settle in for dinner and two nights at The North Gregory, an historic building with an impressive past. It saw the first public performance of Waltzing Matilda and heard the clandestine meetings that launched the Queensland and Northern Territory Aerial Services, a little airline we now know as Qantas.

*The North Gregory Hotel - 2 nights
Breakfast and dinner at hotel | Picnic Lunch*

Day 4: (BD) Winton**Friday July 22**

After breakfast, it's time to explore Winton, home to about 900 people but attracting thousands of visitors every year. Originally called Pelican Waterhole, it's a small town that has packed a punch in history. There's Arno's Wall, a 2m high and 70m long wonder of art and architecture that contains almost every household item imaginable and the Musical Fence, a wire fence that can be played as a musical instrument that is the first such installation in the world.

Learn more in a visit to the famous Waltzing Matilda Centre before lunch and then it's off to the Australian Age of Dinosaurs Museum. Be guided through the largest collection of Australian dinosaur fossils and see the largest fossil preparation laboratory in the southern hemisphere. After the tour it's time to unwind, grab a drink, enjoy some nibbles, and watch another "Outback Sunset" as the sun goes down over the flat country. Then, settle in for a hearty BBQ feast under the stars while soaking up the amazing Outback lifestyle.

Breakfast at Hotel | Lunch - own Expense | Dinner under the stars

Day 5: (BLD) Winton > Boulia**Saturday July 23**

It's on the road again today, for the comfortable 360km drive west through Jump Up and Channel Country and Mitchell Grass Downs to Boulia. First stop is Middleton where the hotel, built during the Cobb & Co era, has the distinction of being one of the most isolated in Queensland. Further west is Cawnpore Lookout with its spectacular views of the Lilleyvale Hills. Continue through the Great Artesian Basin to Boulia on the Tropic of Capricorn. The aptly-named Stone House Museum is a cool retreat to see the remains of the large marine reptiles, sharks and fish that once inhabited the inland sea here.

And if you've ever wondered about the mysterious Min Min Lights, you can meet eccentric characters such as Bluey and Mrs McGreal who will share stories about the unexplained balls of glowing light that have appeared to travellers for a century. Decide for yourself if the phenomena is real or legend.

Dinner is at The Australian Hotel Motel where you'll spend the night.

The Australian Hotel Motel 1 night

Breakfast and dinner at hotel | Picnic Lunch

Day 6: (BLD) Boulia > Birdsville**Sunday July 24**

Board the coach after breakfast for the 380km trip through the Diamantina Shire to Birdsville. Lunch is at the Royal Hotel in Bedourie, an oasis in the desert at the base of a sand dune surrounded by Eyre Creek. It's home to the famous and "uniquely Australian" camp oven "The Bedourie". Arriving in Birdsville we stay for three nights at Australia's most iconic outback pub, the Birdsville Hotel, while exploring the state's south-west corner, only 14km from the South Australian border at the end of the Birdsville Track.

Birdsville Hotel 3 nights

Breakfast – Dinner at hotel | lunch Royal Hotel Bedourie



Day 7: (BLD) Birdsville > Innamincka**Monday July 25**

After breakfast, board a flight for a scenic tour of the Birdsville region as we fly to Innamincka for a cruise on Cooper Creek. At Innamincka you can wander the banks of the Cooper Creek and visit the historic hospital turned interpretive center. (Lunch at the Innamincka Hotel included).
We Return to Birdsville for some local sightseeing and afternoon free time

Breakfast – Dinner at hotel | lunch

**Day 8 (BD) Birdsville****Tuesday July 26**

Breakfast done, we have the day to explore the local sights around Birdsville. After lunch wander the streets and have a cold drink to soak up the atmosphere of the iconic hotel before joining Alex from "Big Red 4WD Tours" to travel to Big Red, the tallest sand dune in the Simpson Desert to relax and watch the sunset with a cool drink & nibbles before returning to the Hotel for dinner

Breakfast – Dinner at hotel | lunch own expense

**Day 9: (BLD) Birdsville > Windorah > Eromanga****Wednesday, July 27**

Today we turn east again, headed for Eromanga which claims to be the furthest town from the sea in Australia. It's also home to significant discoveries of Australia's largest dinosaurs. Lunch is in Windorah, in the heart of cattle country where the Thomson and Barcoo rivers join to form Cooper's Creek. Along the way, we stop at the famous Betoota Pub. Once left to decay in a ghost town in the desert plain, the 1880s sandstone building is the only building in Betoota. Continuing our journey, we arrive in Eromanga, where tonight, we enjoy a themed dinner at the Eromanga Natural History Museum.

Cooper's Country Lodge | Eromanga Motel

Breakfast – at Hotel | lunch - Windorah | Dinner – Museum

Day 10: (BLD) Eromanga > Quilpie > Charleville**Thursday July 28**

After breakfast there's time for a visit to the Natural History Museum again where there's everything from the tiniest fossils to the mightiest dinosaurs. You'll meet titanosaur sauropods Cooper and George, the largest dinosaurs to have ever been found in Australia. The guides will demonstrate how to prepare fossilised bone and you'll see the incredible Eulo megafauna fossils.

On arrival in Quilpie, we make our first stop at the Visitor Information Centre, Museum and Gallery where their local guide will board our coach for a town tour. Discover the history and unique landscapes of Quilpie town, Baldy Top Lookout, St Finbarrs' Opal Altar and the Quilpie Airport mini museum. Our tour includes lunch at the *Quilpie Heritage Inn* (aka The Brick) which has been carefully restored to its original splendour. We move on to Charleville for our last night.

Waltzing Matilda Motel

Breakfast – Dinner at Motel | lunch Quilpie Heritage Inn

Day 11: (B D) Charleville > Roma**Friday, July 29**

This morning we have time for the **WWII Secret Airbase guided Tour**, visiting 7 significant locations on what was an USAAF Base. Discover why over 3500 United States Army Airforce personnel were stationed in Charleville during WWII. In this tour you will discover; aviation history, romance stories, living quarters and appreciate the extreme measures taken to keep one of the most sought-after secrets of WWII, safe.

After lunch, we board our Coach for an afternoon journey to Roma

Explorers Inn Roma

Breakfast – Dinner at Motel | lunch - Own Expense

Day 12: (B L) Roma > Brisbane > Sunshine Coast**Saturday, July 30**

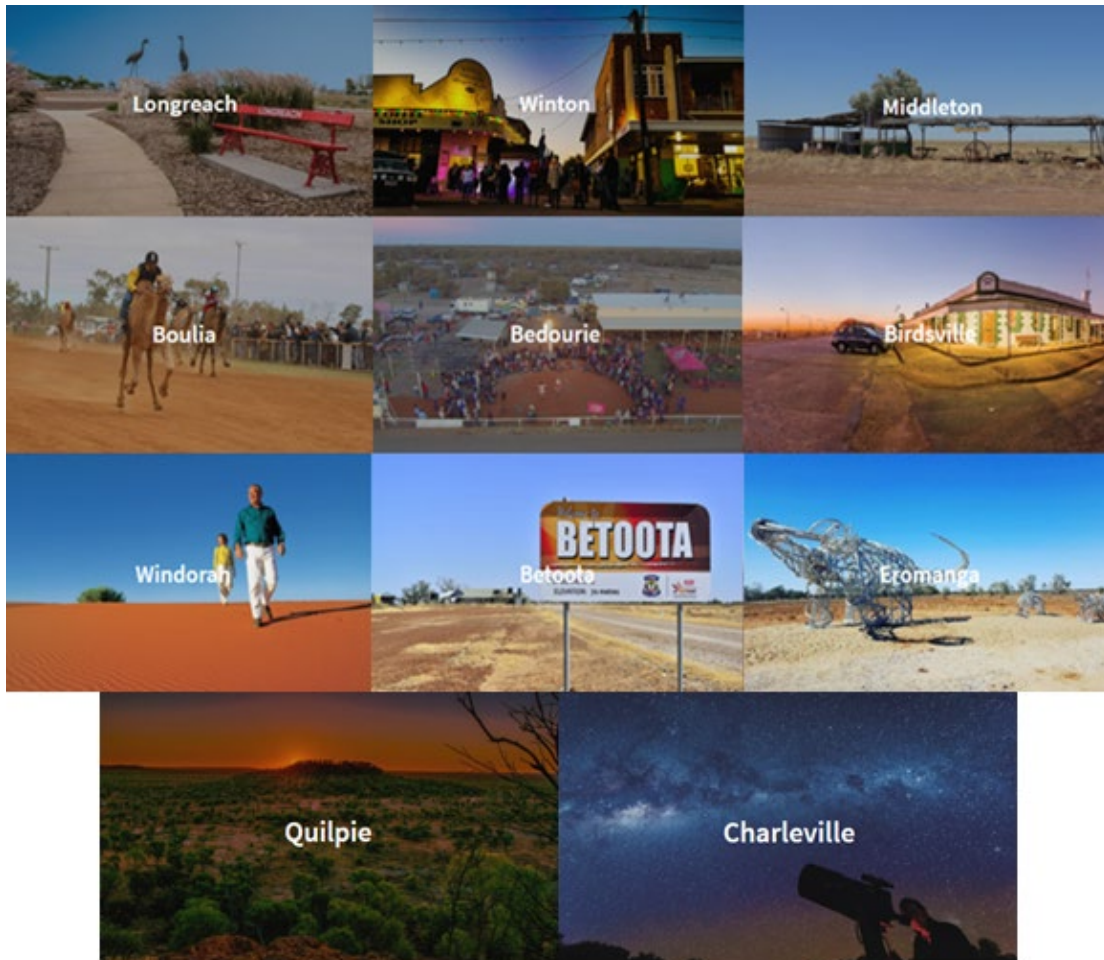
After an amazing time in SW Inland Queensland, we leave Roma and travel east along the Warrego Highway through the rich Darling Downs to Toowoomba. After a break for lunch, we will continue to Brisbane and the Sunshine Coast with everlasting memories of Outback communities, magical scenery, the local characters we have met and, and the friends we have made on the way

“What an adventure we have experienced together over the past 12 days! You have achieved a remarkable feat traveling this vast yet rewarding landscape. Spending your days uncovering the lively and diverse communities with their rich and industrious history. Being captivated by the isolation of the ancient lands painted with raw beauty. All the while making ever lasting friendships with your fellow explorers as the distant horizon streamed by. The Australian Outback is truly a most enchanting place to visit, and you can now arrive home feeling like you have truly accomplished an extraordinary adventure!”

TOUR HIGHLIGHTS

- Fly - Brisbane to Longreach
- Camden Park Station Tour & Dinner
- Thomson River Sunset Cruise
- Smithy's Outback Dinner & Show
- Lark Quarry Conservation Park
- North Gregory Historic Hotel
- Waltzing Matilda Centre
- Australian Age of Dinosaurs Museum
- Outback Sunset BBQ Dinner
- Middleton
- Boulia – Min Min Lights
- Bedourie – Royal Hotel - lunch
- See - extremely rare Waddi trees
- 3 N Stay at the Birdsville Hotel
- Flight to Innamincka
- Cooper Creek
- Big Red 4WD tour - Sunset Drinks Etc
- Betoota Pub
- Windorah
- Eromanga
- Eromanga Natural History Museum
- Quilpie – Local tour - lunch
- Charleville
- WW2 Secret Air Base tour

The itinerary may be subject to change without notice. Whilst every effort is made to adhere to the itinerary as provided, CT Travel reserves the right to alter the touring and attractions as dictated by circumstances and conditions outside the company's control. Alterations may be made to ensure the smooth running of the tour. Every attempt will be made to ensure alterations do not adversely affect the operation of the tour. CT Travel will not be held responsible for weather-based cancellations, or those closures made at a venue's discretion.



PO Box 629
Coolum Beach
QLD 4573
ABN 31871210455



www.cttravel.com.au
tours@cttravel.com.au
07 53911648
0409 278 971